

What is Enterprise Architecture?

Enterprise Architecture (EA) is a structured approach used to define an organisation across different domains. It is often used as a practice to help transform the organisation through understanding, reconciling and planning across the Business, Data, Application and Technology domains.

Enterprise Architecture brings a new perspective on how an organisation is viewed.

What is 1GovEA?

1GovEA is a framework and methodology for guiding the public sector agencies in Malaysia in building EA practices. The primary aim of 1GovEA is to provide a common approach, set of steps and templates to ensure a consistent method of EA development in the public sector.

1GovEA will define a new way for public sector agencies to approach business and technology challenges. With the adoption of EA practices, agencies will establish a single view of the current business and technical environment of the organisation.

What is the 1GovEA Framework?

It defines a set of core architecture elements in building and operating EA practices. Acting as a functional guide, the 1GovEA Framework describes 6 key components an agency will need to develop as it embarks on building its own EA practices.

Further details on each of the components is available overleaf.

What are the expected values of 1GovEA in the Malaysian Public Sector?

- 1 *Convergence of Business and Technology Strategies*
- 2 *Strengthening Cross-agency Collaboration Agenda*
- 3 *Re-enforcing Capability Development in the Public Sector*
- 4 *Realigning 1GovEA in the Public Sector with ISP*

How will 1GovEA be implemented?

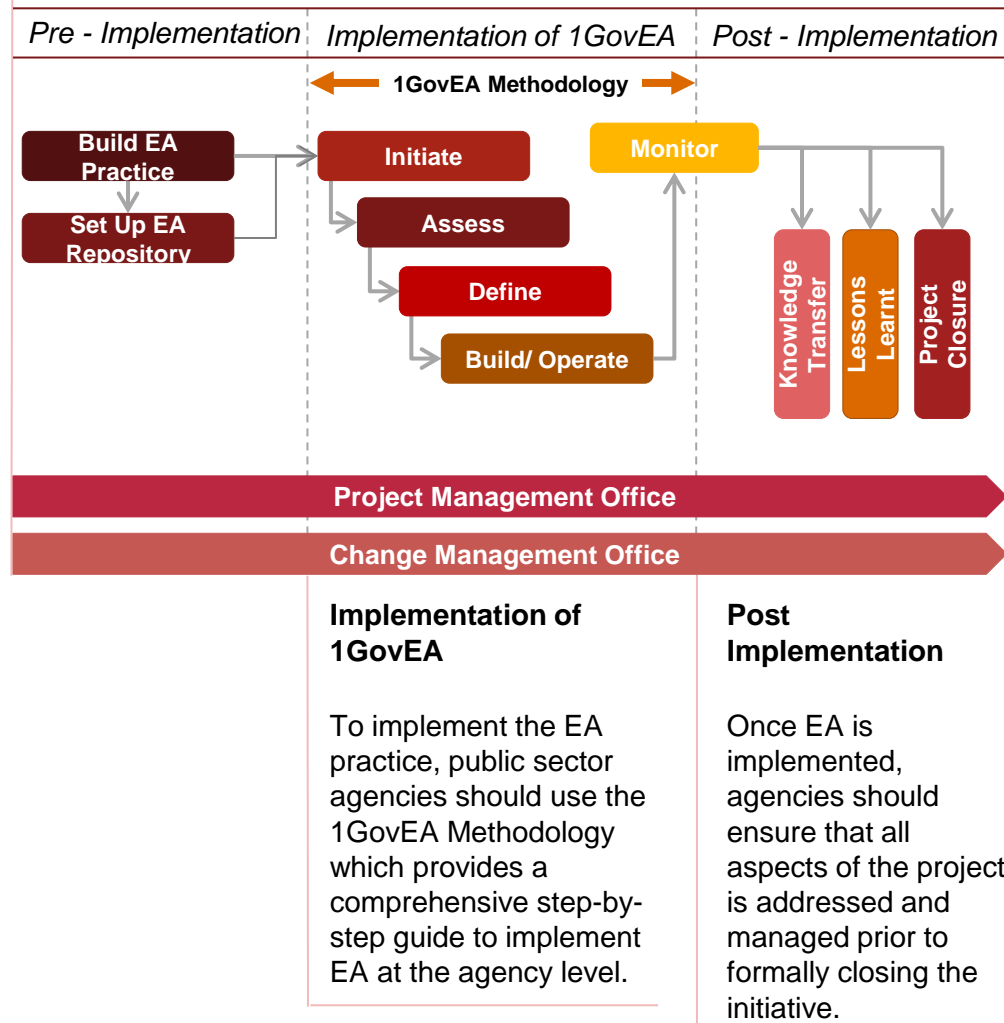
1GovEA will be implemented in several phases across all agencies, beginning with MAMPU in Phase 1, followed by selected agencies in Phase 2 and after that, other public sector agencies in subsequent phases.

The implementation approach is divided into 3 different stages and is supported by Project Management Office and Change Management Office work streams that run across the implementation plan.

Pre-Implementation

Prior to embarking on an EA implementation, public sector agencies should establish a sustainable EA practice within the agency.

Agencies should also set up a dedicated EA repository to enable the storing of information in a structured manner.



Want to know more?

Contact:

Malaysia Administrative Modernisation and Management Planning Unit (MAMPU)

Aras 6, Blok B2

Kompleks Jabatan Perdana Menteri

Pusat Pentadbiran Kerajaan Persekutuan, 62502 Putrajaya, Malaysia

Phone: 03 - 8872 3000 | Fax: 03 - 8888 3721 | Website: www.mampu.gov.my



Blueprint for 1Government Enterprise Architecture (1GovEA)

Getting to know

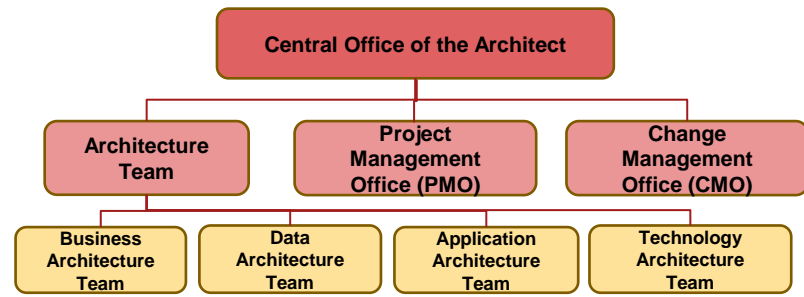


Governance

Describes a **formal structure** set in place to manage the **overall development and management** of EA practices in an organisation or across the public sector as a whole.

A formal governance structure instituted by the government is imperative to drive the adoption of EA practices in the public sector.

For 1GovEA, there will be a dedicated central governance structure at MAMPU, known as the Central Office of the Architect. This will consist of 3 sections and will oversee the overall adoption of EA across the Malaysian public sector.



Tools & Repository

Describes a set of Enterprise Architecture (EA) **tools** available to support the building of an EA practice.

In the 1GovEA Framework, this comprises of 3 key elements:



Methodology

Provides a structured approach to facilitate public sector agencies in **developing, managing and operating** an Enterprise Architecture.

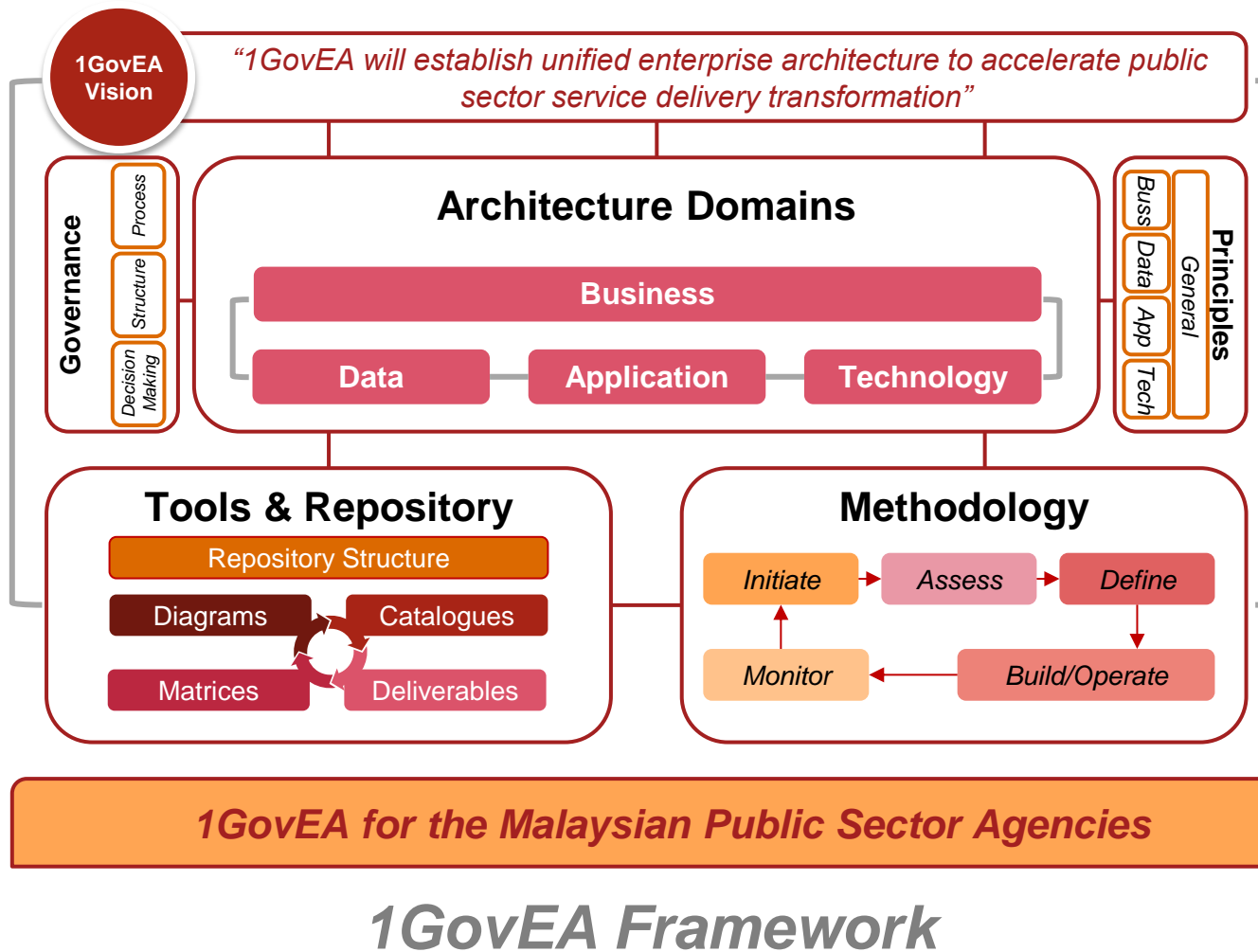
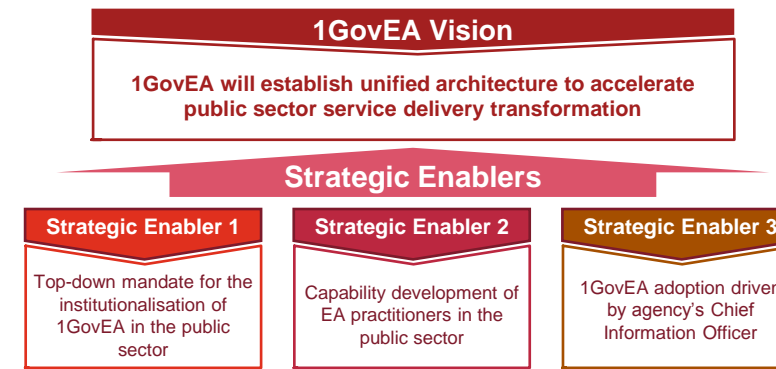
The 1GovEA Methodology comprises of a **comprehensive step-by-step** guide to deliver EA in an agency which is supported by a set of tools and templates of both the deliverables and artefacts.

1GovEA Vision

Defines the **ultimate long-term goal** that an organisation aspires to achieve with Enterprise Architecture in the future and how they plan to realise that goal.

It supports the EA development as it:

- Acts as a reference point for guidance on all architectural work
- Relays EA objectives to all stakeholders

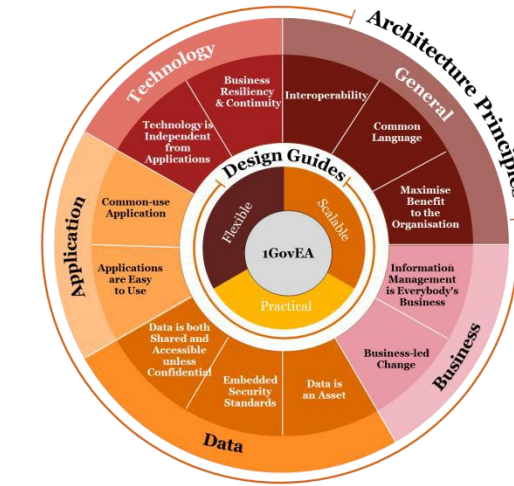


1GovEA Framework



Principles

Provides a fundamental set of **overarching architectural standards** that supports the development of **standardised and consistent** architectures across the agency.

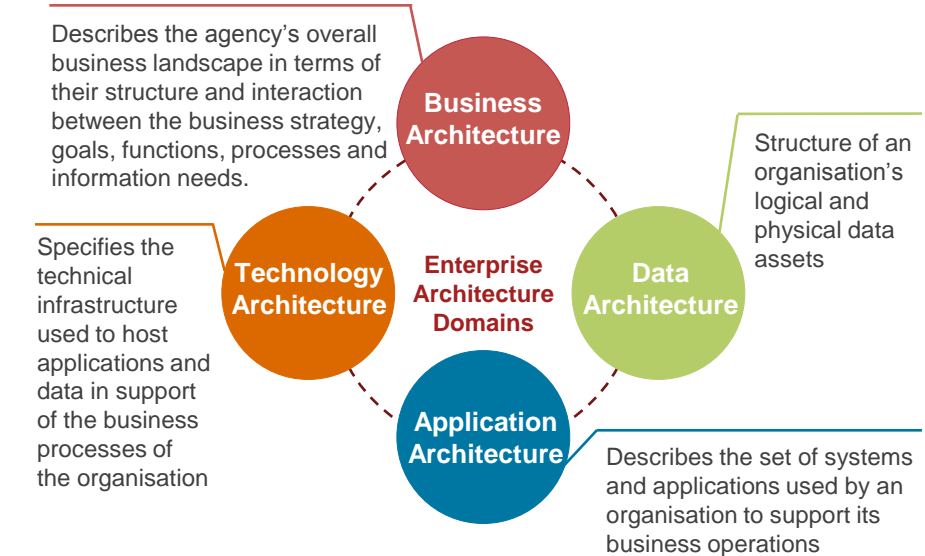


The principles are documented to:

- Provide a guide for Ministries/ Agencies to develop EA practices
- Drive functional requirements from an architecture perspective based on good practices
- Set general direction and basic understanding of the domain for an architect

Architecture Domains

Provides a **structured breakdown** of functional system capabilities in a public sector agency within **4 architecture domains**.



Structuring the organisation's operations across the 4 domains assists in:

- Communicating **relationship between the organisation's business and technology** to stakeholders
- Providing a consolidated view of the **organisation's current and target Enterprise Architecture**
- Highlighting **links and interdependencies** between elements in the 4 domains
- Identifying any **gaps** between the current and target architecture states and subsequently, the corresponding **solutions** to address them
- Defining future** architecture across the domains required to support the agency's business strategy